



## PH 406

“Rise above the ordinary—experience true luxury at the top.”

Perched high above the world, the Penthouse offers breathtaking views of the iconic West Coast USA map. Indulge in unmatched luxury with your own wellness center, private parking spots, and a dedicated logistics area below for seamless operations. Enjoy the convenience of private elevators that connect every part of your space effortlessly. Here, elegance meets functionality, giving you a sanctuary where the view is as spectacular as the experience.



By purchasing this mod, you acknowledge that you have read and understood the known bugs and their fixes. Please be aware that not everything may be perfect, as the game does not officially support these types of mods. As such, bugs may still occur, and you accept this possibility by proceeding with the purchase.  
**If a bug may occur, you can simply restart the map and everything is back in its place.**

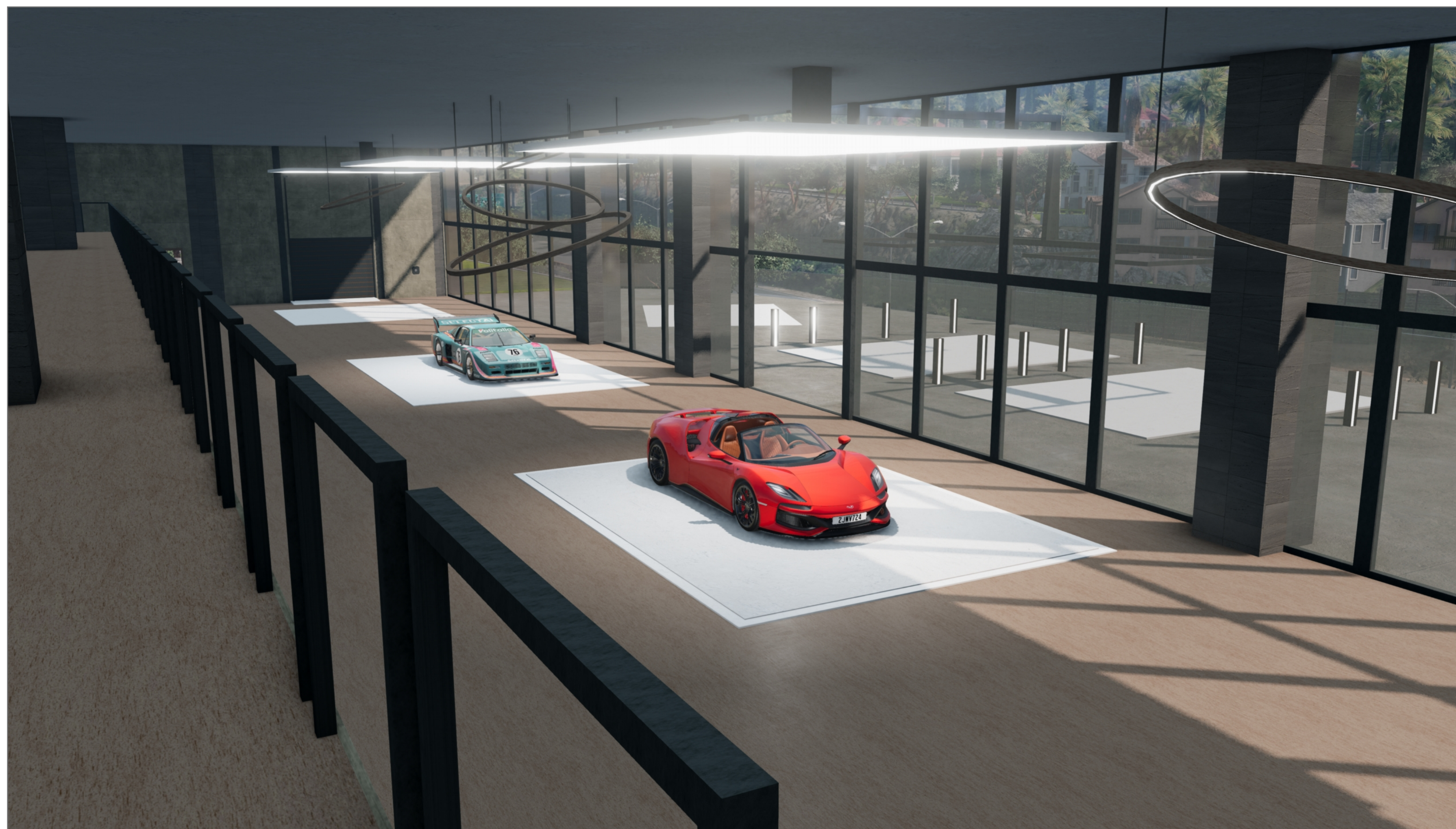
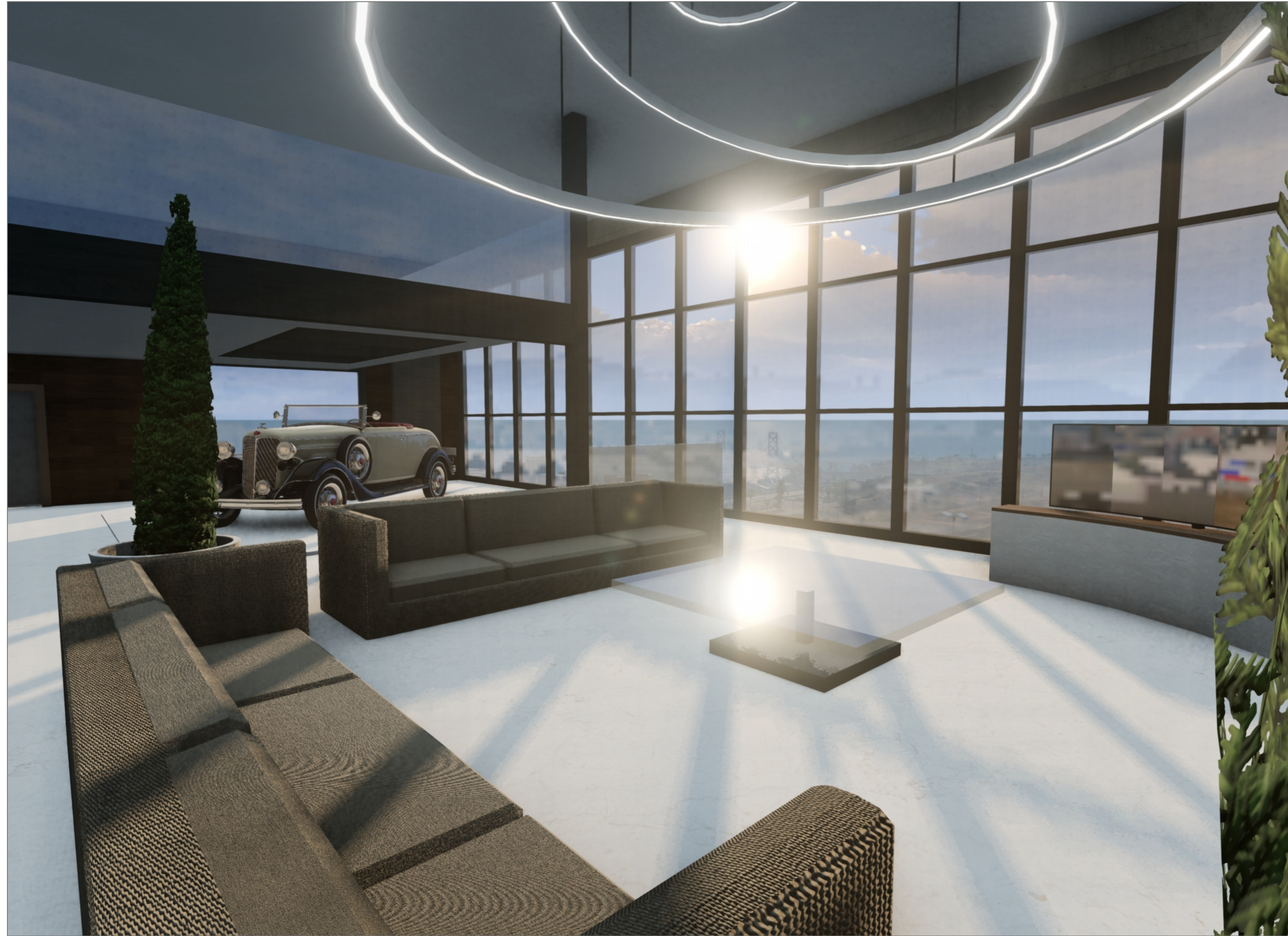
---

Price €7.490.00  
(€7,49)



# QUICK OVERVIEW

## PENTHOUSE





# PH 406

## PENTHOUSE

This top-floor penthouse balances historic industrial elements with modern convenience

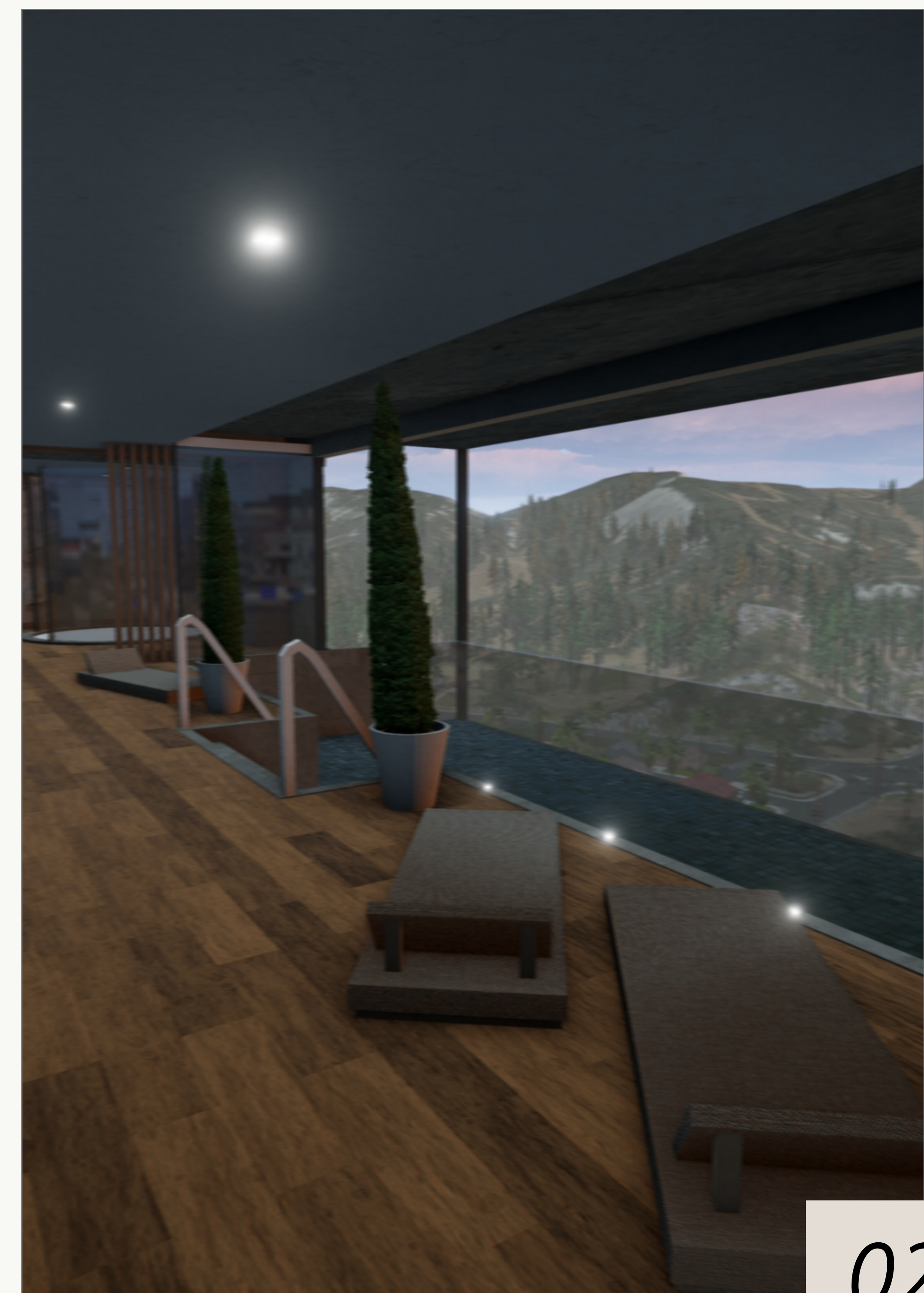
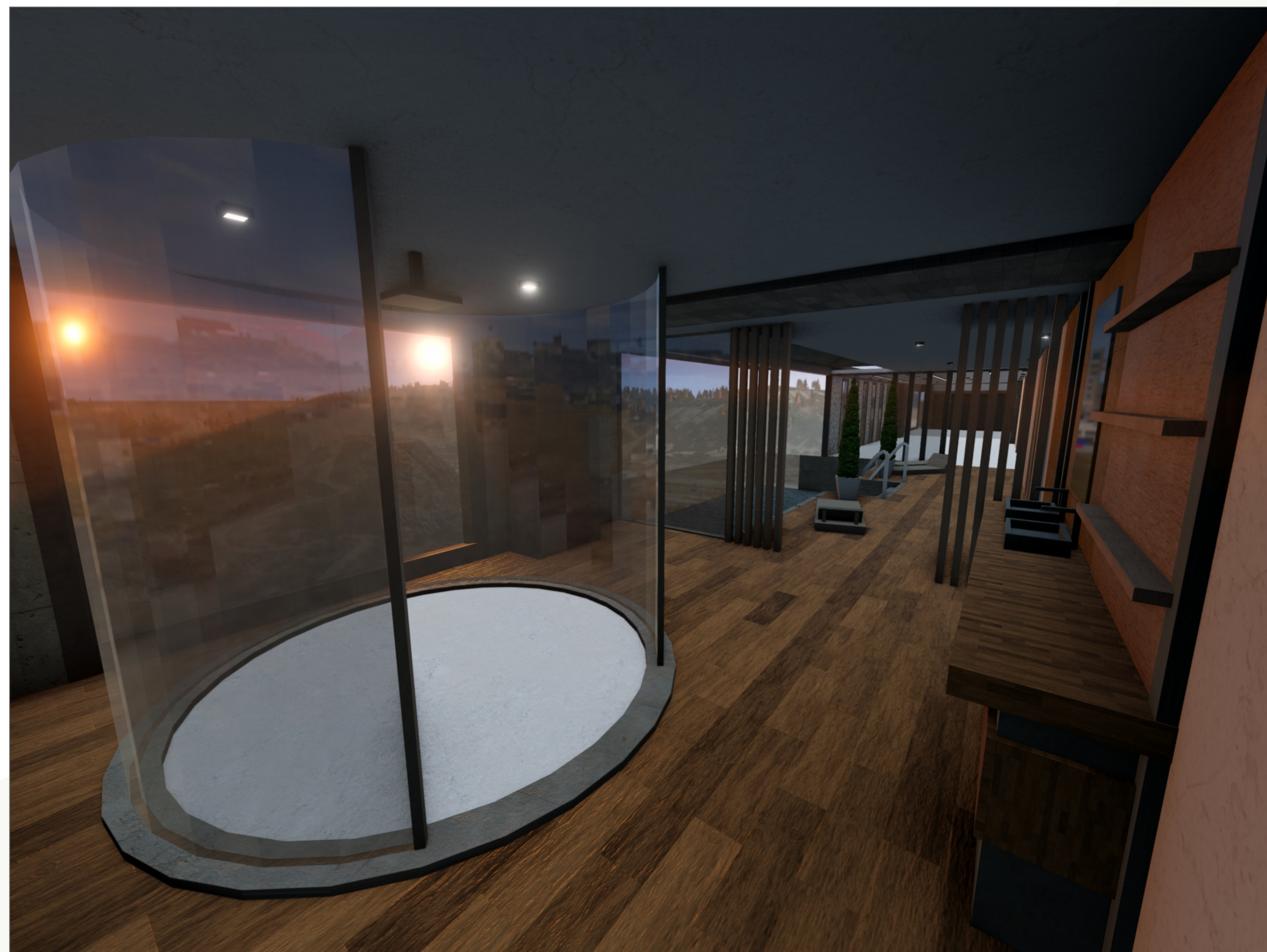
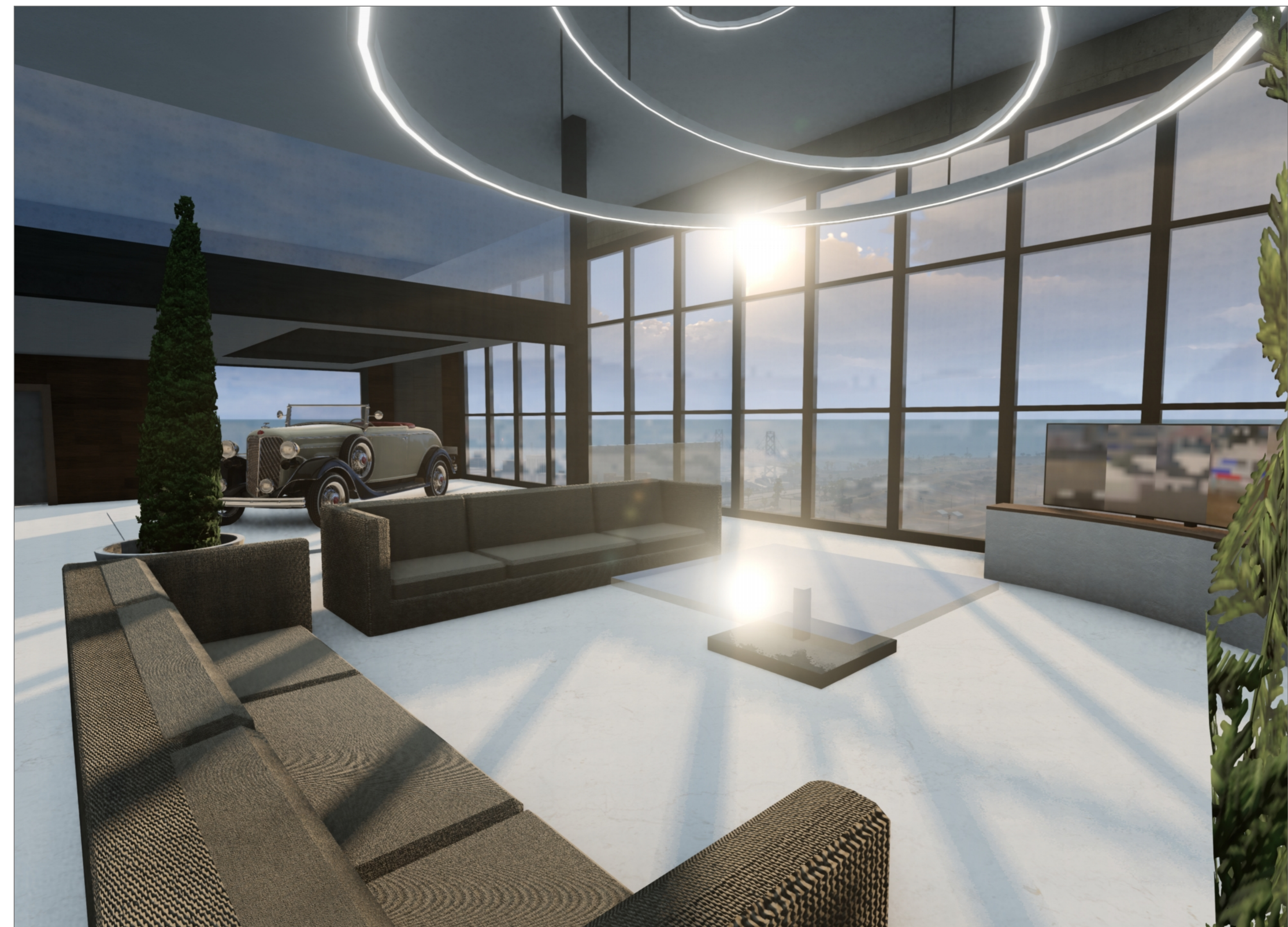
€7.490.000

### size

Interior - 2,321 SF+/-  
Exterior - 1,221 SF+/-

### features

*6 Private Parking Spots*  
*Private wellness area*  
*Private car & person lift*  
*Working elevators & doors*  
*Working JBEAM*  
*All PBR Textures*  
*Full modelled interior*  
*Working lights*





# FUNCTIONAL

## Private car lift

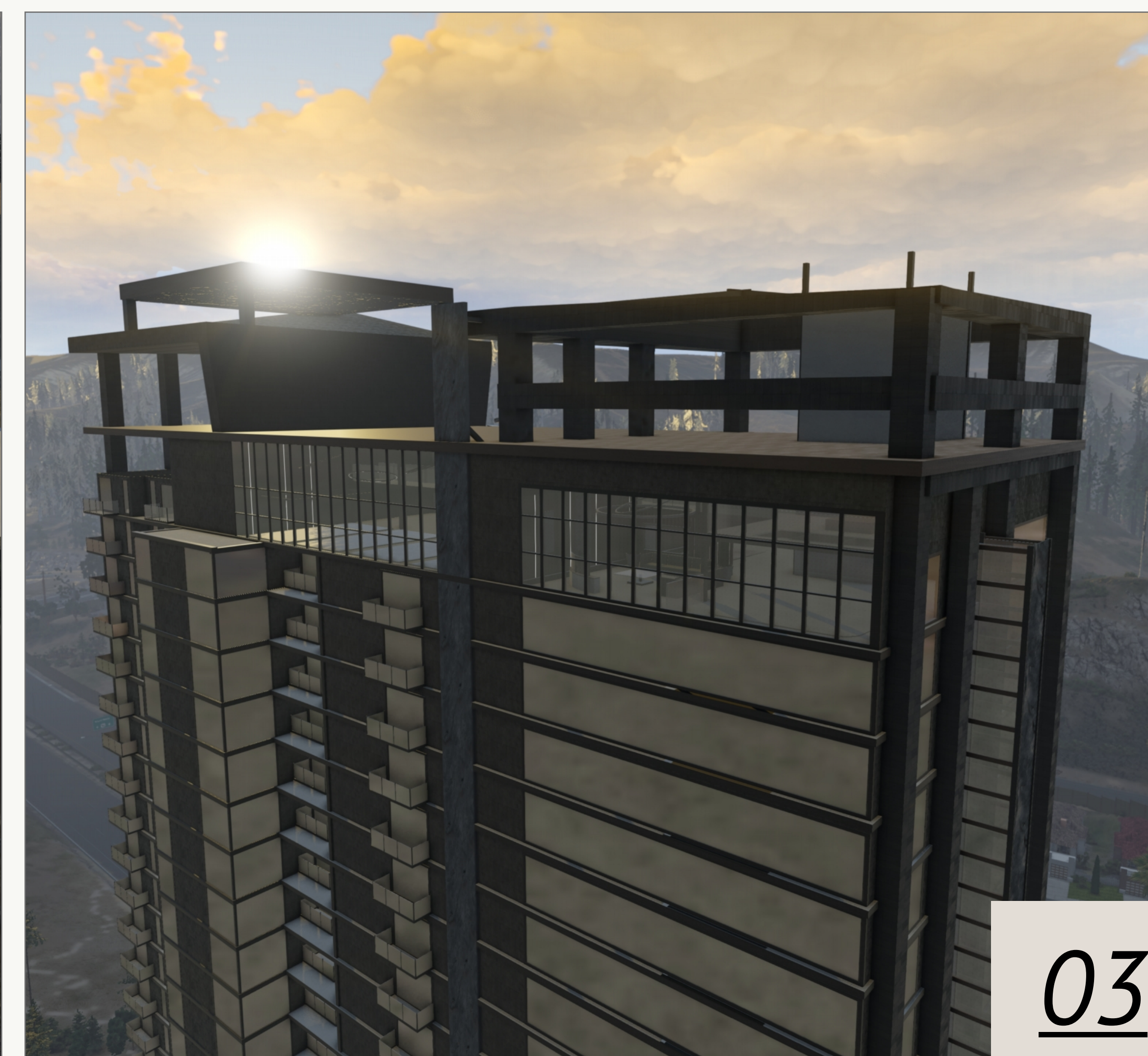
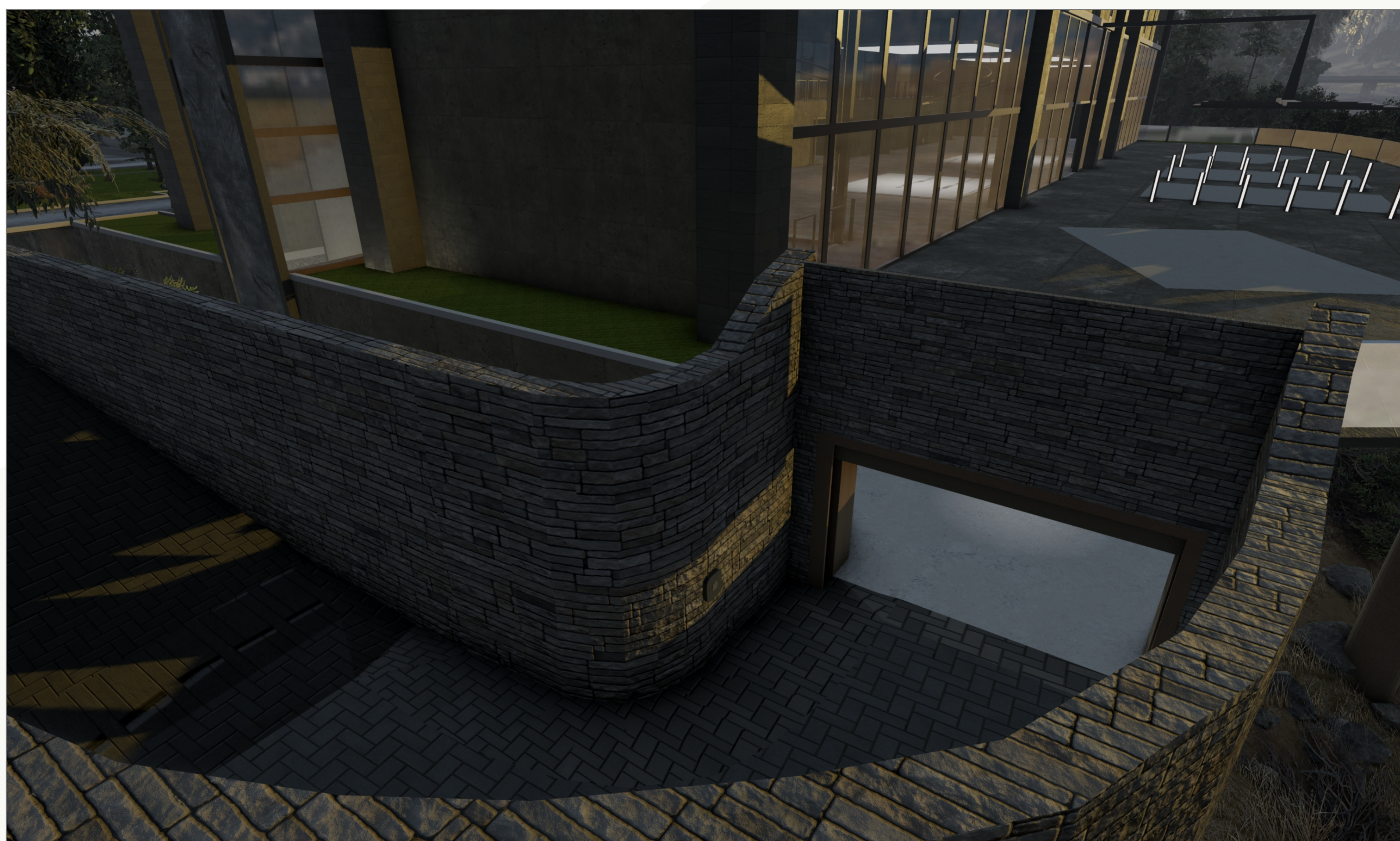
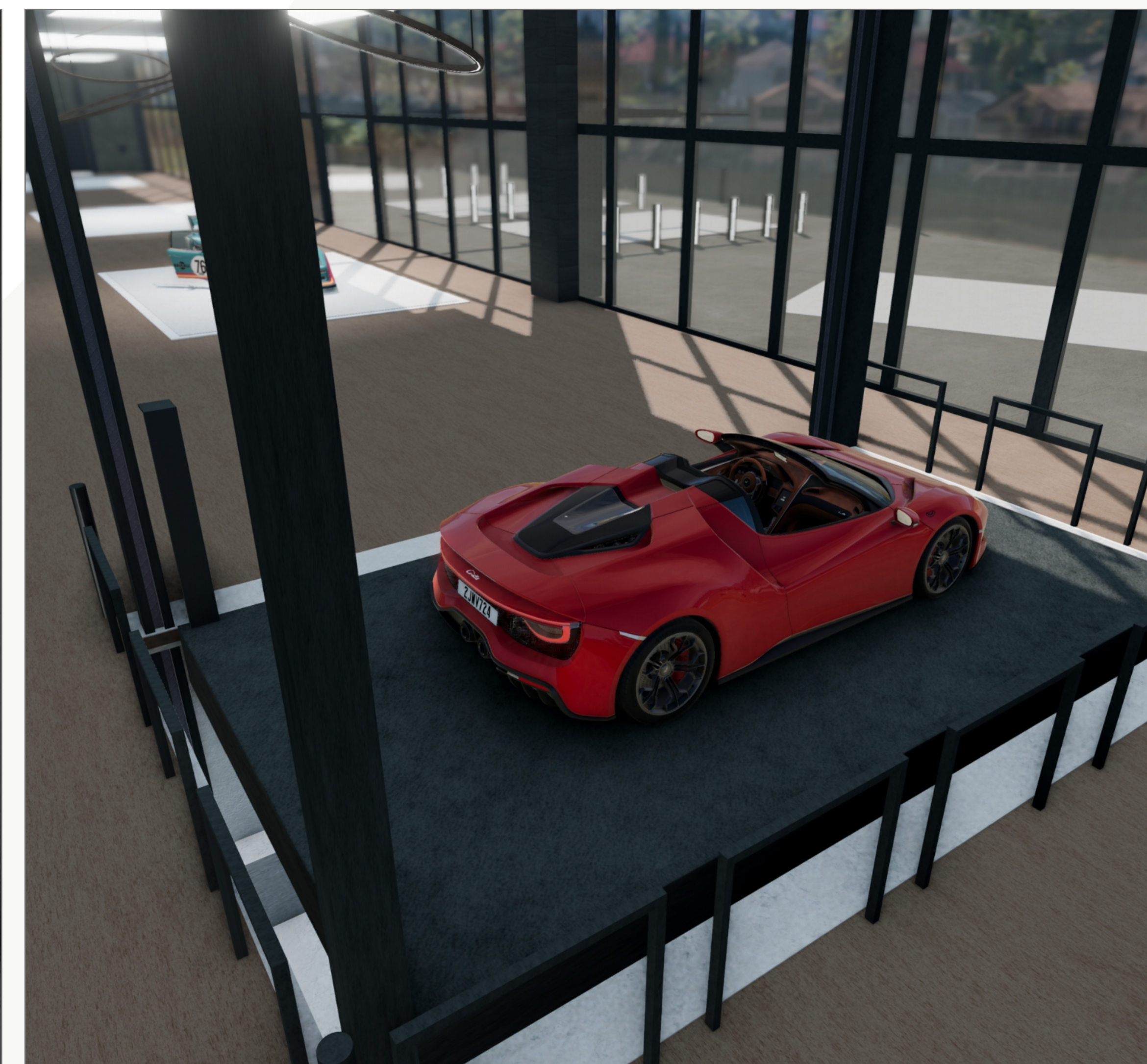
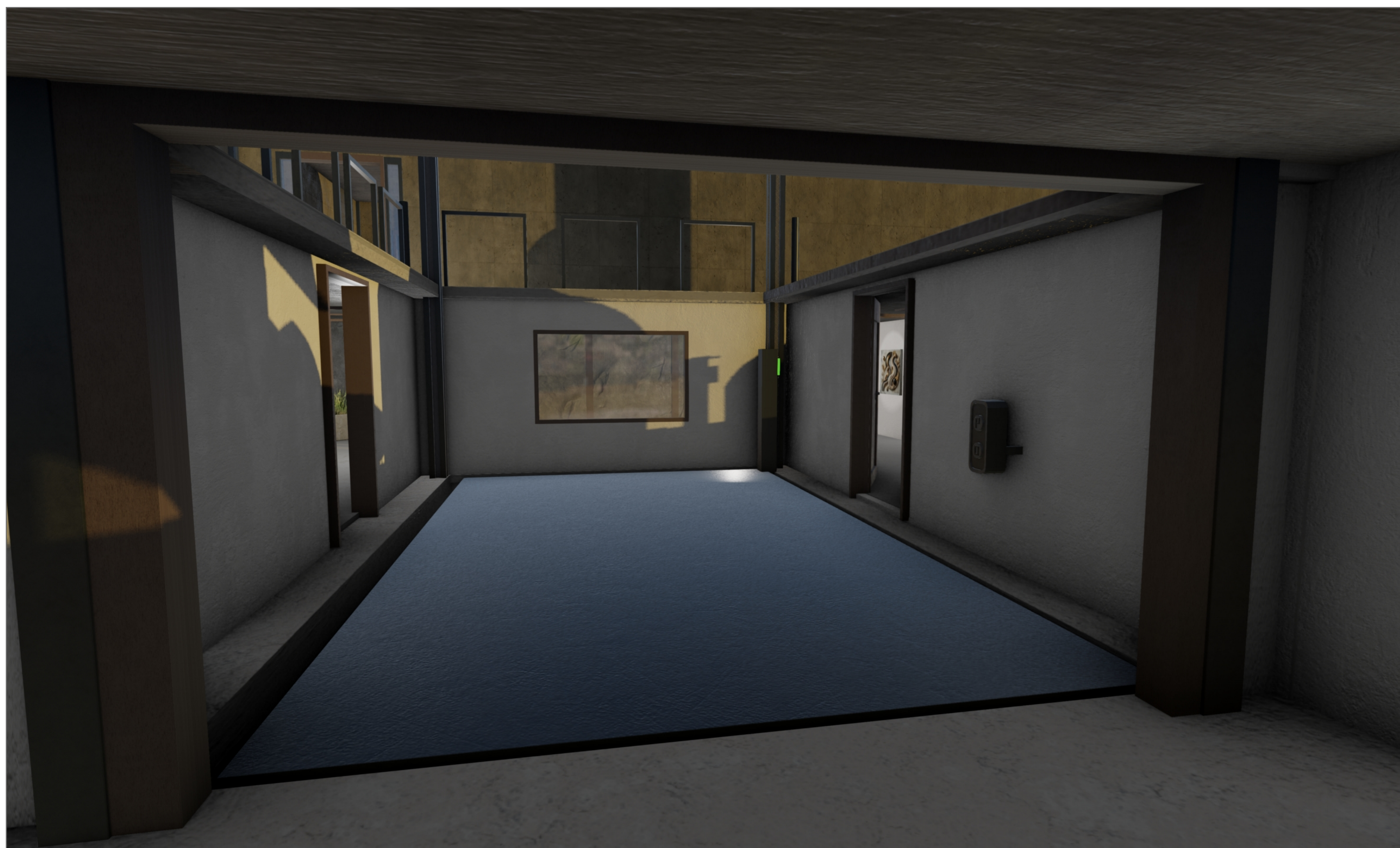
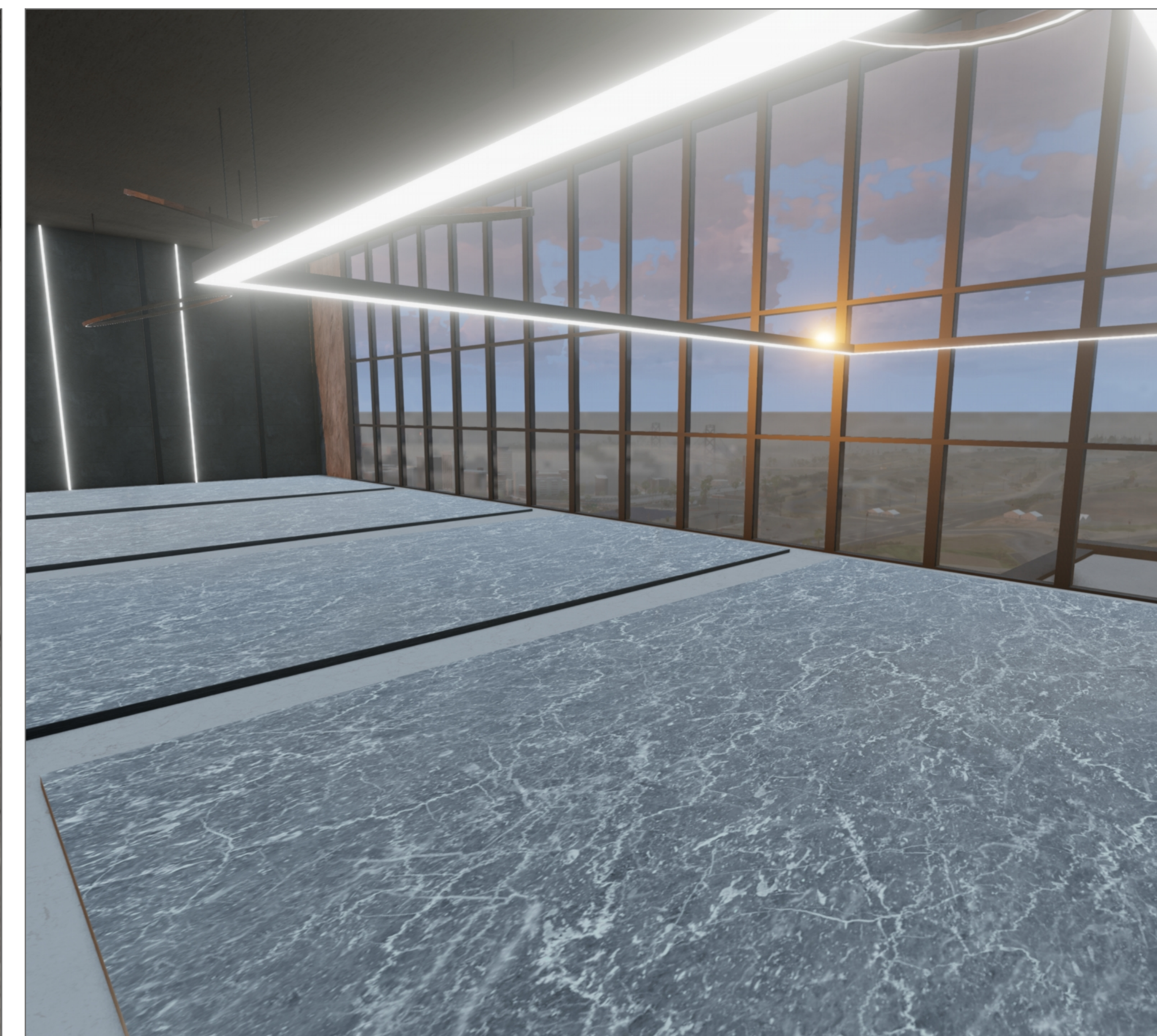
This penthouse comes equipped with a personal automotive elevator to bring your vehicles into your garage at level 100, and even a place to park in your living room.

### *features*

*7 x 5 m elevator platform*

*Max height. 300cm*

*Private car & person lift*





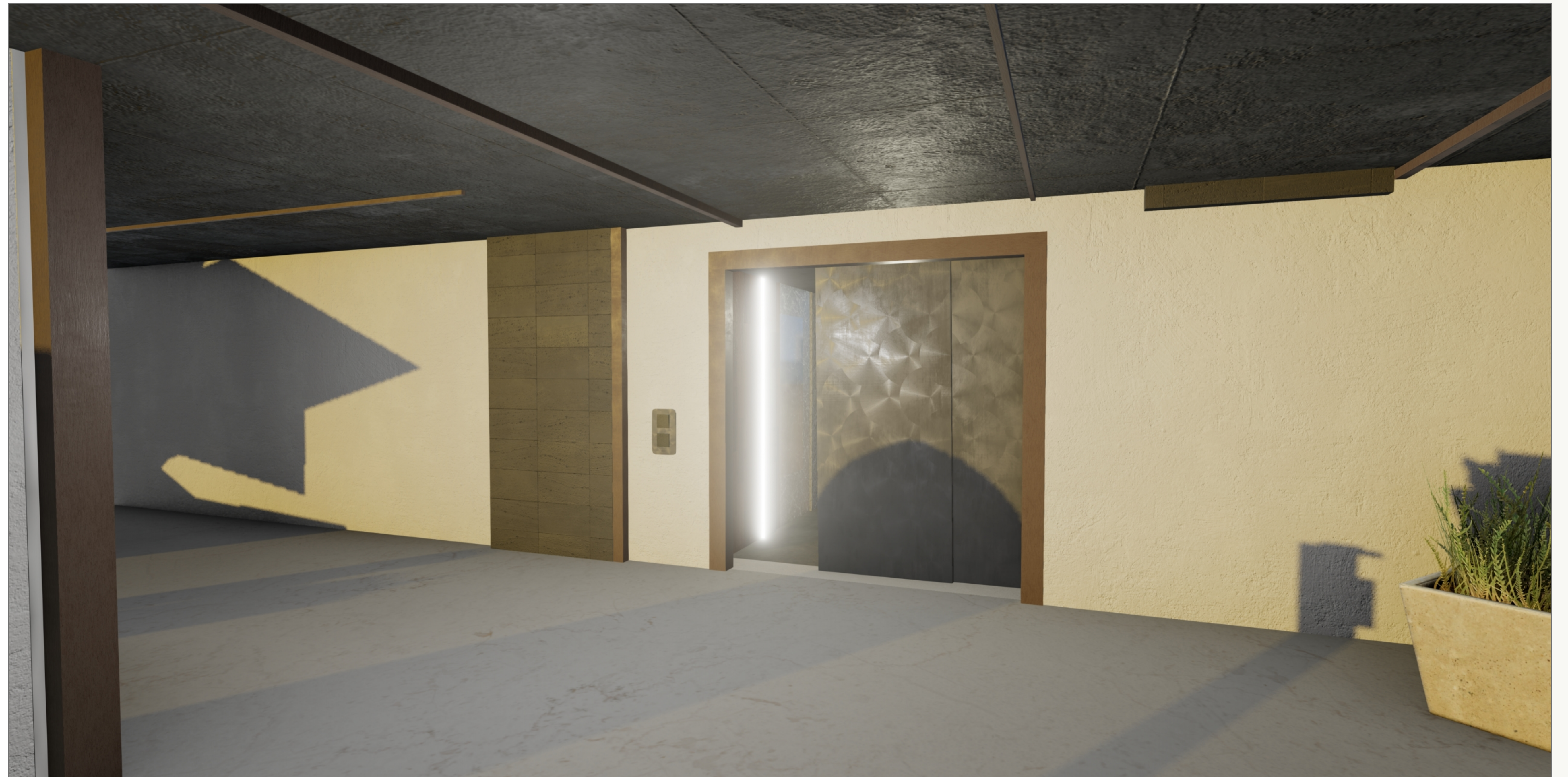
# FUNCTIONAL

## Private person lift

Designed to offer seamless and sophisticated access to your penthouse. This fully interactive elevator provides direct entry to your personal spaces, ensuring both privacy and convenience. Crafted with modern aesthetics and smooth functionality, it's the perfect addition to elevate your luxury virtual lifestyle.

### *features*

*Acces to floor 100*





# In-house Dealership

The Ground Floor Dealership, a premium showroom designed to showcase your finest vehicles in style. With ample display space and a sleek, modern layout, this dealership is the perfect place to highlight your collection.

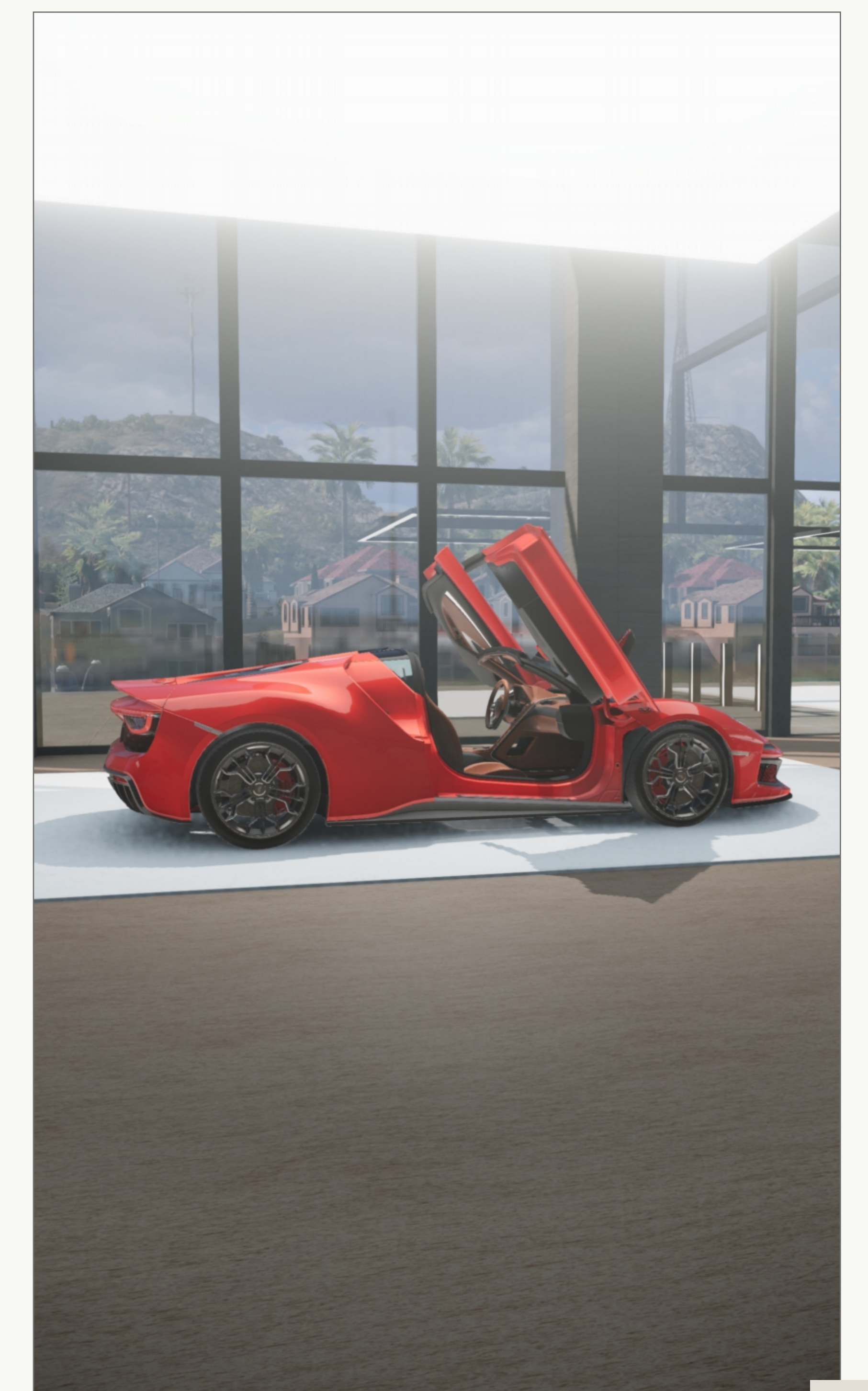
Featuring interactive elements like functional doors and customizable spaces, it's built to impress visitors and elevate the presentation of your virtual automotive assets.

## *features*

*Multiple photography locations*

*Interactive, openable doors*

*Access via car elevator or outside*





**FUNCTIONAL**

## **JBEAM In the Dealership**

The in-house dealership is equipped with a car elevator, allowing vehicles to be transported from the underground logistics floor to the upper levels. Additionally, the user can open and close the access doors to move vehicles in and out of the building.





# Underground Parking Garage

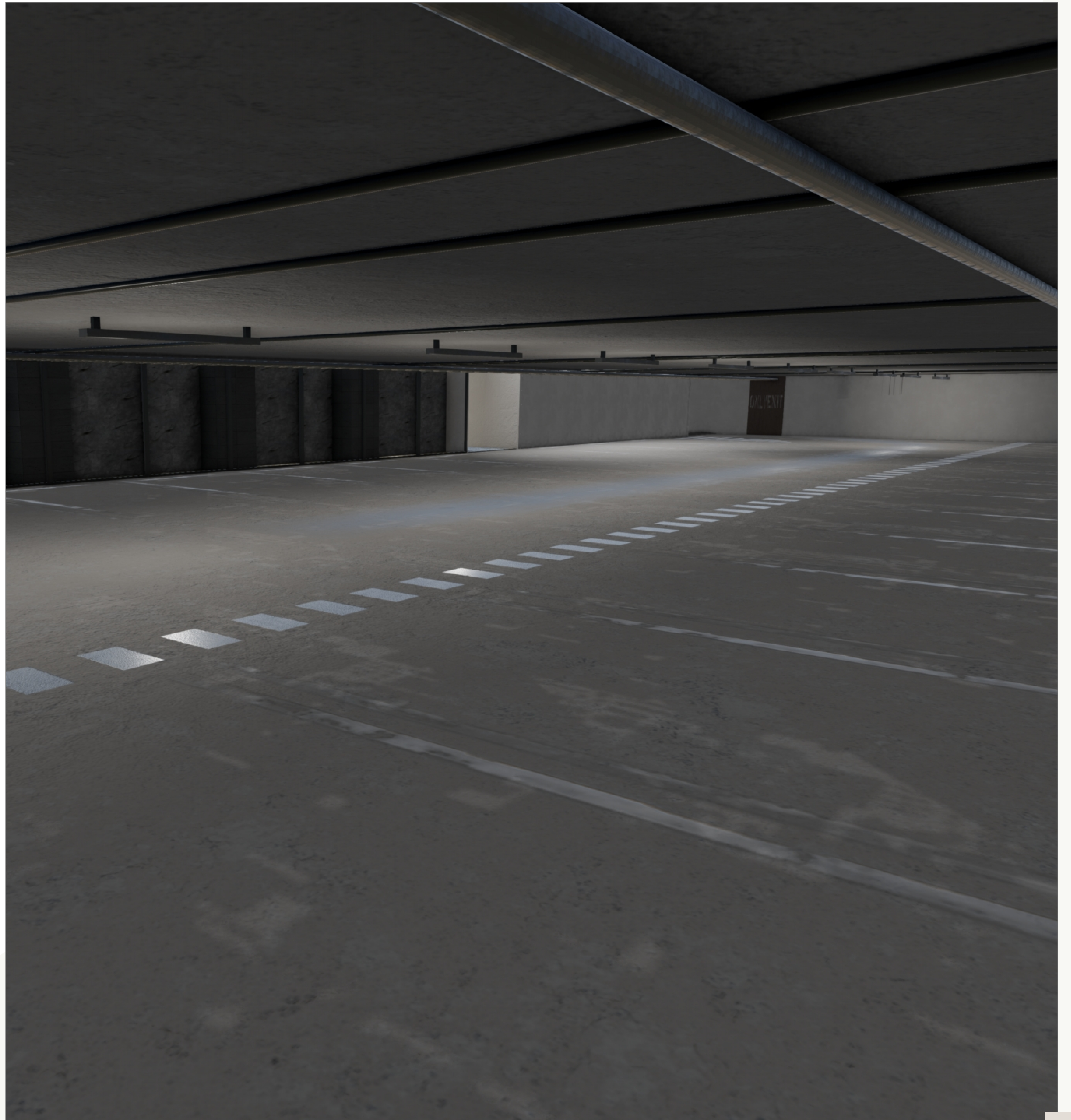
The Underground Parking Garage offers ample space for your personal vehicles, visitor parking, or dealership inventory. With secure and convenient access, it complements the ground floor dealership and ensures a seamless parking experience for all.

## *features*

*50 parking spots*

*Access to dealership via stairs*

*Working lights*





# Underground Loading Dock

Designed for efficiency and convenience, the Underground Loading Dock offers seamless access for trucks and deliveries. Whether it's restocking the dealership or managing personal shipments, this fully functional dock ensures smooth logistics while maintaining a sleek and organized environment. Perfectly integrated into the property, it's built for practicality without compromising style.

## *features*

*2 working doors*

*Shortcut access to dealership elevator*

*2 loading docks*

*Working lights*





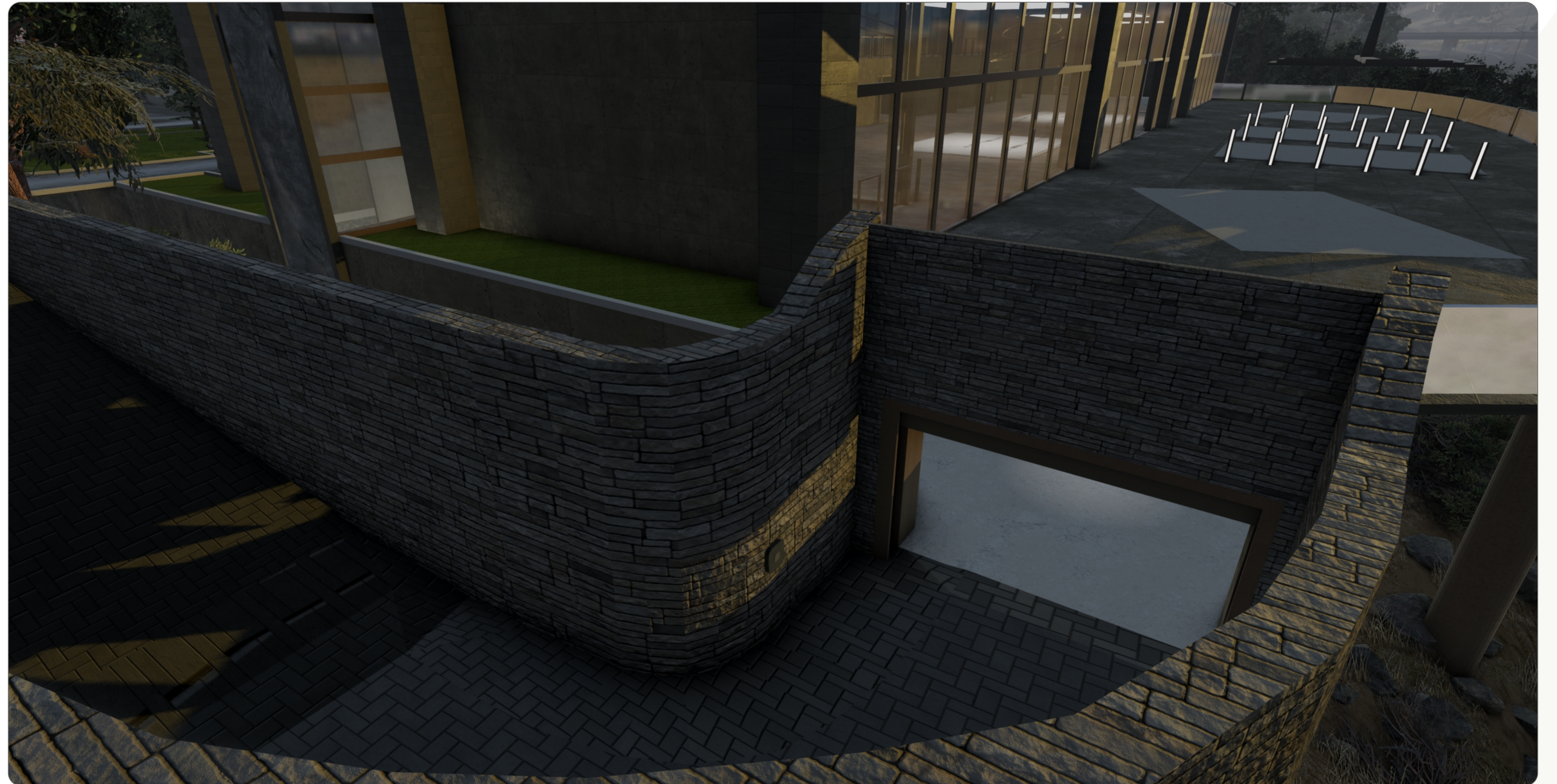
# Private access to elevator

Enter in style with exclusive access to your Private Car Elevator, designed to take you and your vehicle directly to the heart of luxury. Step out into a refined corridor, lined with carefully curated artwork, leading seamlessly to your personal elevator. Every detail has been crafted to deliver an experience of sophistication, privacy, and effortless convenience.

## *features*

*Private acces*

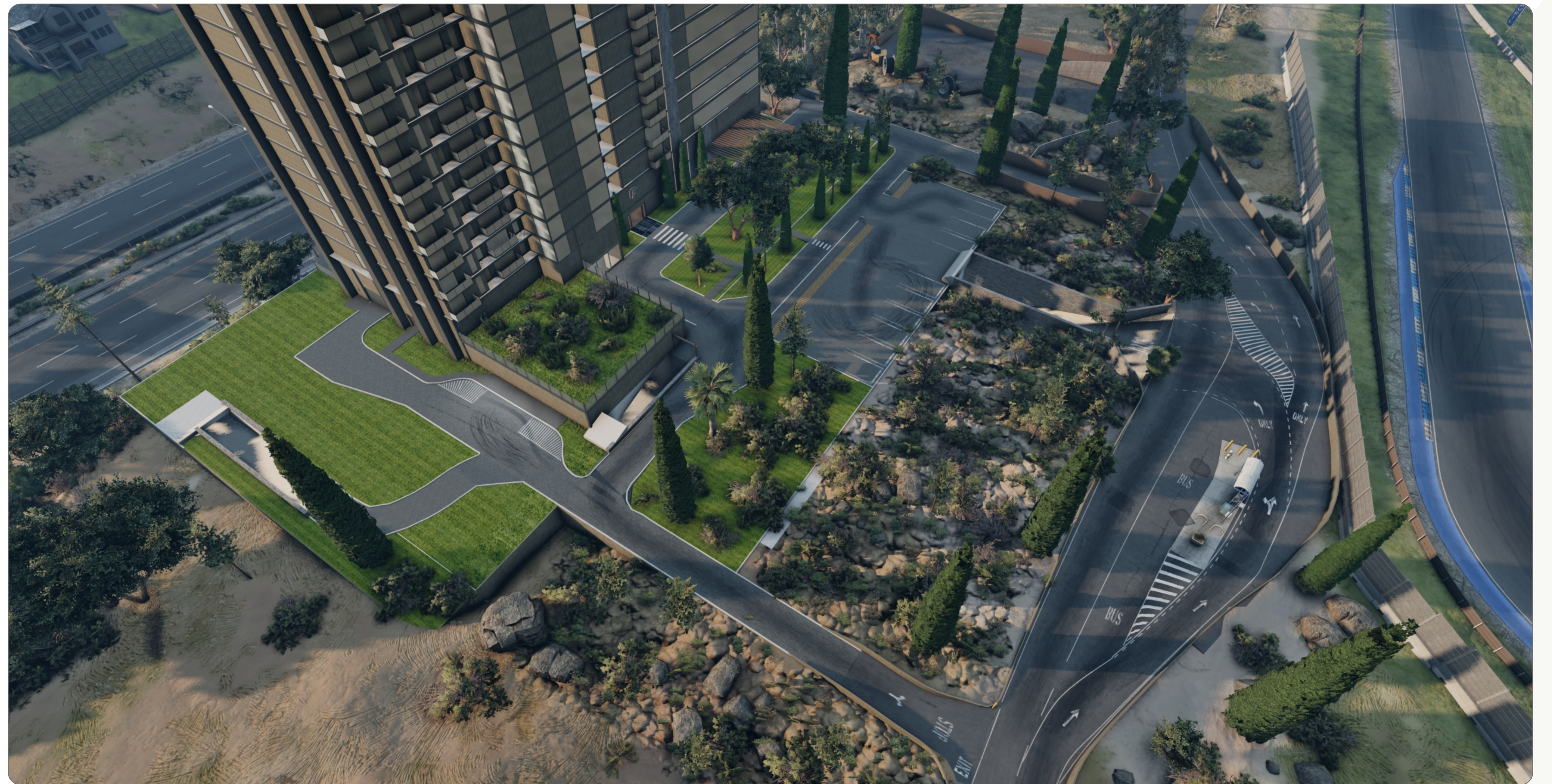
*Curated Artwork*





# Ton of features

It's impossible to list every detail the Penthouse and Dealership are packed with features designed to impress. From interactive elements to seamless functionality, every corner is crafted for luxury and innovation. Whether you're exploring the penthouse's countless amenities or the dealership's versatile spaces, there's always something new to discover. This is more than just a building—it's an experience.



*Junction edited for access*

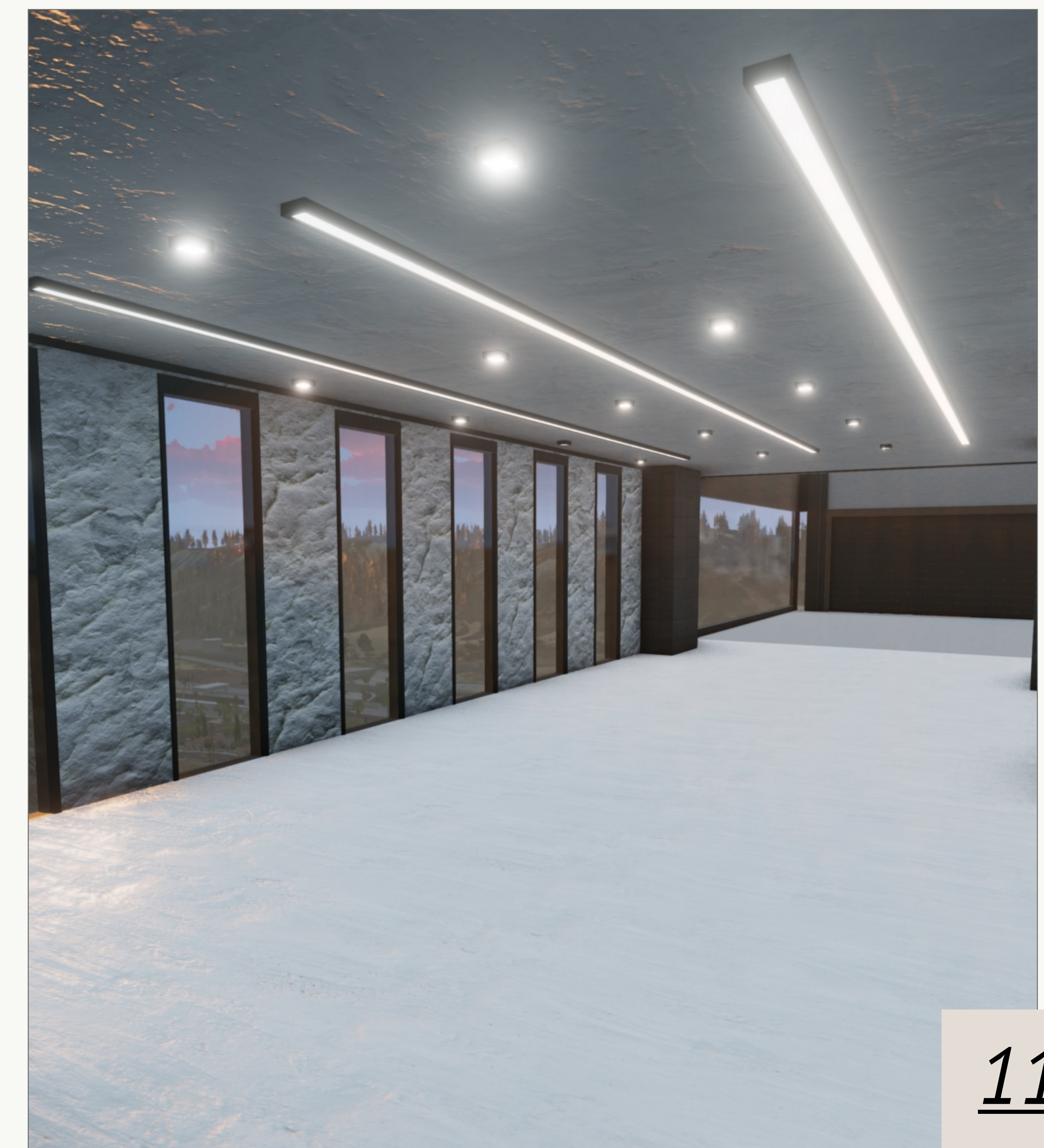
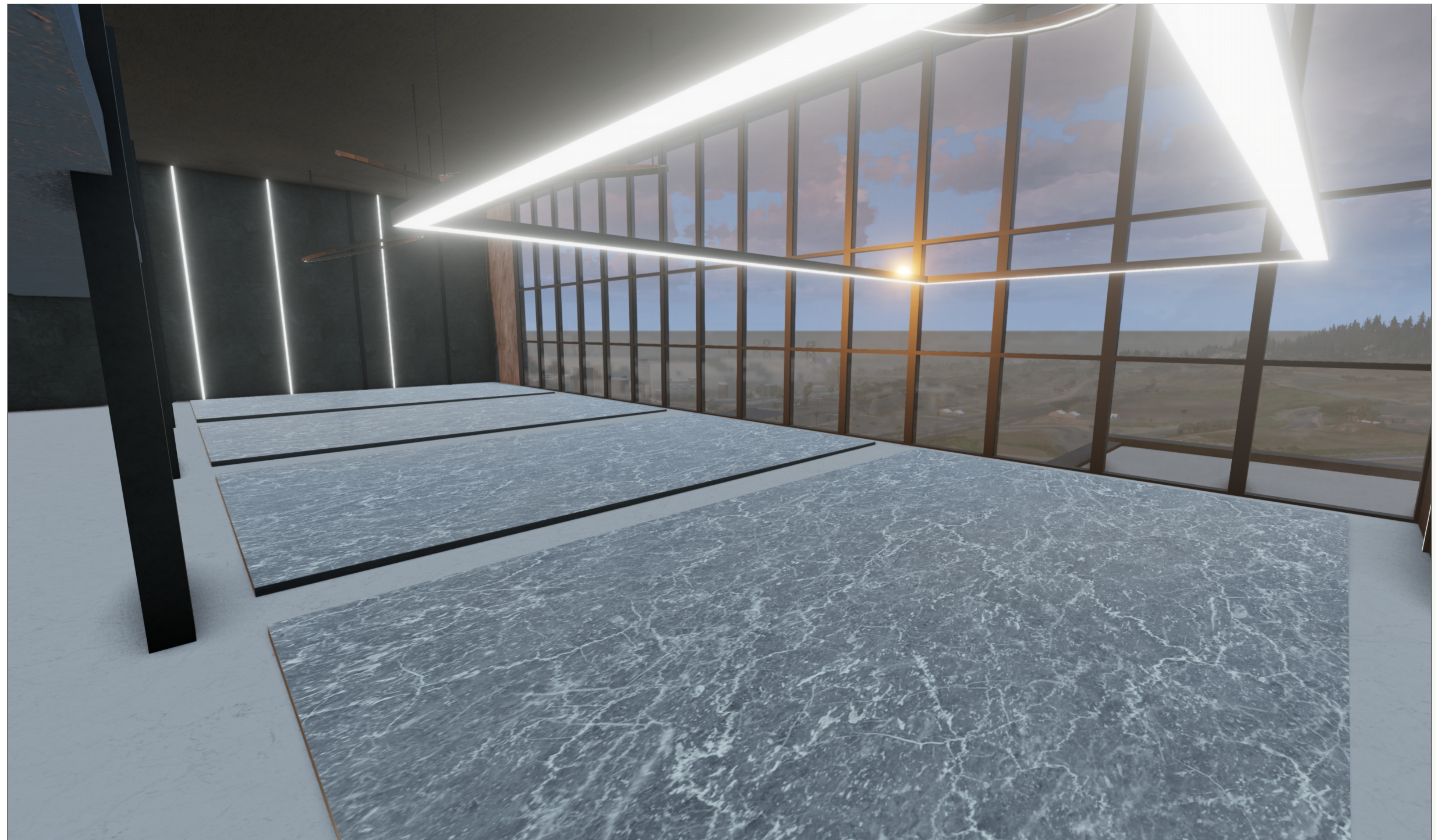


# Multiple parking locations

Showcase your luxury vehicles and creations in style with multiple unique parking spots designed for every occasion. Store up to four vehicles in the dedicated penthouse garage, display one near the pool for a stunning view as you relax, park another in the living room for quick access, and keep one beneath the bed—allowing you to admire your masterpiece from the comfort of both the couch and your bedroom. It's not just parking—it's a statement of your passion for innovation and design.

## *features*

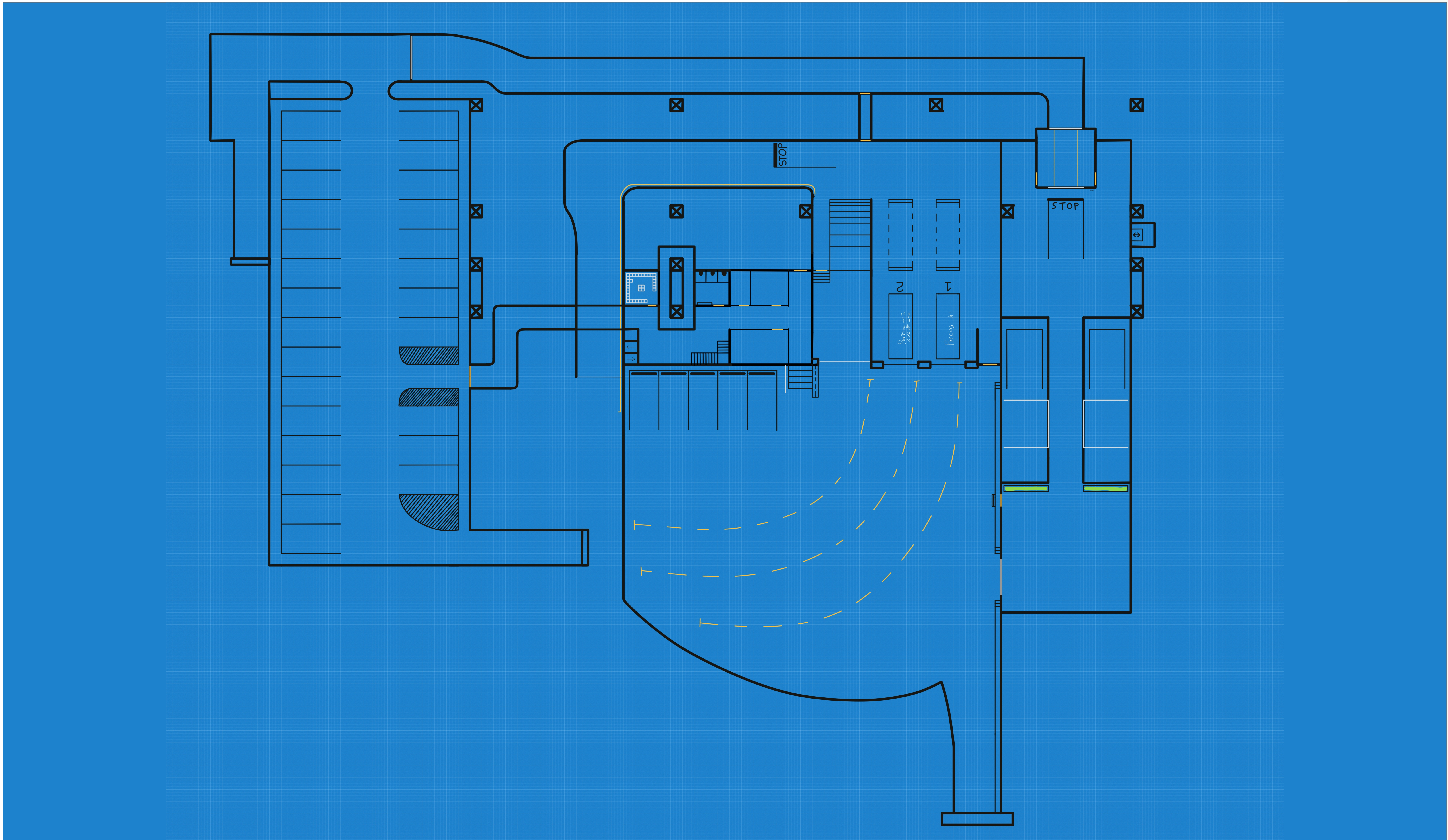
*Dedicated parking spots*





# FLOORPLAN

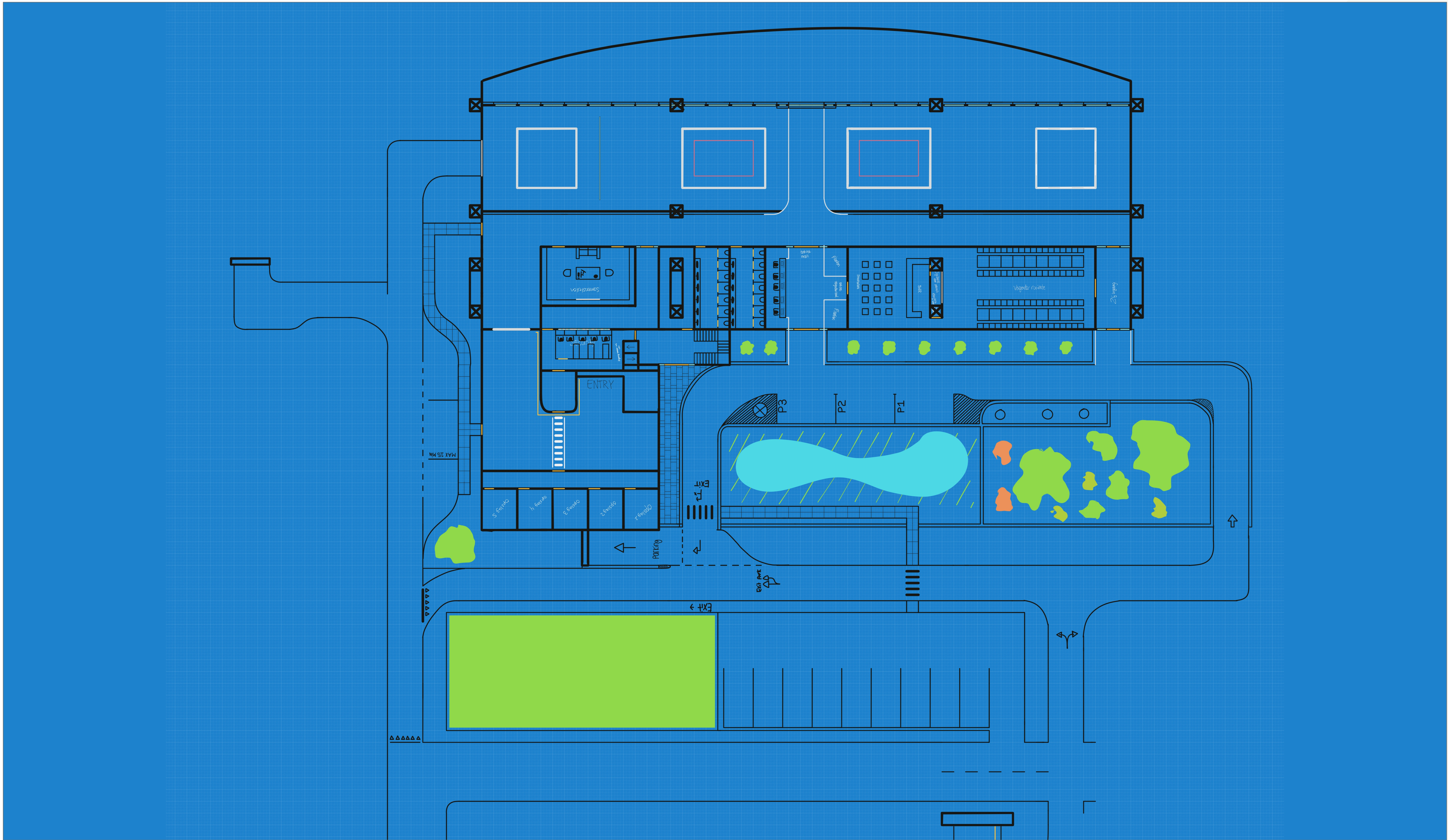
LEVEL -1





# FLOORPLAN

LEVEL 0





# KNOWN BUGS

## **I exited my vehicle and now my character is stuck in a wall**

*Be sure your character is selected (TAB) then Use **shift + c** and move to somewhere else using (WASD) then press **control + F7**.*

---

## **I walked in the building too close to a wall and now my character is stuck**

*Be sure your character is selected (TAB) then Use **shift + c** and move to somewhere else using (WASD) then press **control + F7**.*

---

## **My car tyres explode randomly.**

*Use INSERT to reset your car to its current position.*

---

## **I did shift + c and teleported my character but now it's stuck in the roof.**

*Be sure your character is selected (TAB) then Use **shift + c** and move to somewhere else using (WASD) then press **control + F7**. Don't press F7 too Close to the roof otherwise your character will be stuck in the roof.  
More to the ground is beter.*



# Good to know

## 1. Make sure “Bloom” is activated in the settings.

*This is to show the lights of the building. If you experience low FPS. You can turn of “Bloom” to maximize FPS*

---

## 2. Use shift C then (WASD) & F7 to move your character

*Be sure your character is selected (TAB) then Use shift + c and move to somewhere else using (WASD) then press control + F7.*

---

## 3. If you hide your UI the triggers for the elevators and doors are not visible

*if you hide your UI with (Alt + U) the triggers for the buttons are not visible.*

---

## 4. Use INSERT if your car tyres explode

*Sometimes the car tires will explode, if this happens use INSERT to reset your car to its current position.*

---

## 5. Take the person elevator up and down

*If you only take the elevator to the top and then spawn or shift + c to a different location, obviously the elevator is then still at the top floor. So either shift + c to the elevator or, take the elevator up and down.*





## Legal

The “West Coast Expansion, Penthouse & Dealership” mod is the intellectual property of Virtual Real Estate. Unauthorized modification of this level is strictly prohibited without prior written consent from Virtual Real Estate. Additionally, distributing or transmitting the associated .zip file is illegal. Ownership of the .zip file is exclusively granted to the legal, paying customer.